

## IMPORTANT SAFETY RULES

Please read, understand, and follow all instructions carefully before installing and using this product. Keep for future reference.

# Graphite Gray Panel Pool Set™

13'1 1/2" x 9'10" x 49" (400cm x 300cm x 124cm)



For illustrative purposes only.

Don't forget to try these other fine Intex products: Pools, Pool Accessories, Inflatable Pools and In-Home Toys, Airbeds and Boats available at fine retailers or visit our website listed below. Due to a policy of continuous product improvement, Intex reserves the right to change specifications and appearance, which may result in updates to the instruction manual without notice.

**INTEX®** ©2024 Intex Marketing Ltd. - Intex Development Co. Ltd. - Intex Recreation Corp. All rights reserved/Tous droits réservés/Todos los derechos reservados/Alle Rechte vorbehalten. Printed in China/Imprimé en Chine/Impreso en China/Gedruckt in China.

®™ Trademarks used in some countries of the world under license from/®™ Marques utilisées dans certains pays sous licence de/ Marcas registradas utilizadas en algunos países del mundo bajo licencia de/Warenzeichen verwendet in einigen Ländern der Welt in Lizenz von/Intex Marketing Ltd. to/à/a/an Intex Development Co. Ltd., Hong Kong & Intex Recreation Corp., P.O. Box 1440, Long Beach, CA 90801 • Distributed in the European Union by/Distribué dans l'Union Européenne par/Distribuido en la unión Europea por/ Vertrieb in der Europäischen Union durch/Intex Trading B.V., Ettenseweg 46, 4706 PB Roosendaal – The Netherlands • Distributed in the UK by Unitex Service (UK) Limited, 21 Holborn Viaduct, London EC1A 2DY, UK.  
[www.intexcork.com](http://www.intexcork.com)

116-\*A\*-R0-2508

## TABLE OF CONTENTS

<b>Warnings / Important Safety Rules.....</b>	<b>3-4</b>
<b>Parts References.....</b>	<b>5-6</b>
<b>Setup Instructions.....</b>	<b>7-17</b>
<b>Pool Maintenance &amp; Chemicals.....</b>	<b>18</b>
<b>Winter Preparations.....</b>	<b>19</b>
<b>Long Term Storage &amp; Drainage.....</b>	<b>20</b>
<b>General Aquatic Safety.....</b>	<b>21</b>
<b>Troubleshooting.....</b>	<b>21</b>
<b>Limited Warranty.....</b>	<b>22</b>

### **Special Introductory note:**

Thanks for buying an Intex pool and enclosure. Please read this manual before setting up your pool and enclosure. This information will help extend the pool life and make the pool safer for your family's enjoyment. A team of 2-3 people is recommended for pool and enclosure set up. Additional people will speed up the installation.

No tools are required for the assembly.

## SAVE THESE INSTRUCTIONS

# IMPORTANT SAFETY RULES

Read, Understand and Follow All Instructions Carefully Before Installing and Using this Product.



## WARNING

- **Continuous and competent adult supervision of children and the disabled is required at all times.**
- Secure all doors, windows and safety barriers to prevent unauthorized, unintentional or unsupervised pool entry.
- Install a safety barrier that will eliminate access to the pool for young children and pets.
- Pool and pool accessories are to be assembled and disassembled by adults only.
- Never dive, jump or slide into an above-ground pool or any shallow body of water.
- Failure to set up pool on flat, level, compact ground or over filling could result in the pool's collapse and the possibility that a person lounging in the pool could be swept out/ejected.
- Do not lean, straddle, or exert pressure on the inflatable ring or top rim as injury or flooding could occur. Do not allow anyone to sit on, climb, or straddle the sides of the pool.
- Remove all toys and flotation devices from, in, and around the pool when it is not in use. Objects in the pool attract young children.
- Keep toys, chairs, tables, or any objects that a child could climb on at least four feet (1.22 meters) away from the pool.
- Keep rescue equipment by the pool and clearly post emergency numbers at the phone closest to the pool. Examples of rescue equipment: coast guard approved ring buoy with attached rope, strong rigid pole not less than twelve feet (12') [3.66m] long.
- Never swim alone or allow others to swim alone.
- Keep your pool clean and clear. The pool floor must be visible at all times from the outside barrier of the pool.
- If swimming at night use properly installed artificial lighting to illuminate all safety signs, ladders, pool floor and walkways.
- Stay away from the pool when using alcohol or drugs/medication.
- Keep children away from pool covers to avoid entanglement, drowning, or other serious injury.
- Pool covers must be completely removed before pool use. Children and adults cannot be seen under a pool cover.
- Do not cover the pool while you or anyone else is in the pool.
- Keep the pool and pool area clean and clear to avoid slips and falls and objects that may cause injury.
- Protect all pool occupants from recreational water illnesses by keeping the pool water sanitized. Don't swallow the pool water. Practice good hygiene.
- All pools are subject to wear and deterioration. Certain types of excessive or accelerated deterioration can lead to an operation failure, and can ultimately cause the loss of large quantities of water from your pool. Therefore, it is very important that you properly maintain your pool on a regular basis.
- This pool is for outdoor use only.
- Properly winterize or store the pool when it is not in use for an extended period of time, such as during winter months. Please see "Winter Preparations" or "Long-Term Storage & Drainage" sections.
- While the swimming pool is in use, you will need to operate the filter pump to ensure that there is at least one complete change of water a day. Consult your pump's manual to calculate the necessary operating hours.

**POOL BARRIERS AND COVERS ARE NOT SUBSTITUTES FOR CONTINUOUS AND COMPETENT ADULT SUPERVISION. POOL DOES NOT COME WITH A LIFEGUARD. ADULTS ARE THEREFORE REQUIRED TO ACT AS LIFEGUARDS OR WATER WATCHERS AND PROTECT THE LIVES OF ALL POOL USERS, ESPECIALLY CHILDREN, IN AND AROUND THE POOL.**

**FAILURE TO FOLLOW THESE WARNINGS MAY RESULT IN PROPERTY DAMAGE, SERIOUS INJURY OR DEATH.**

### Advisory:

Pool owners may need to comply with local or state laws relating to childproof fencing, safety barriers, lighting, and other safety requirements. Customers should contact their local building code enforcement office for further details.

# SAVE THESE INSTRUCTIONS

## IMPORTANT SAFETY RULES

Please read, understand, and follow all instructions carefully before installing and using this product. These warnings, instructions, and safety guidelines address some common risks of water recreation, but they cannot cover all risks and dangers in all cases. Always use caution, common sense, and good judgment when enjoying any water activity. Keep for future reference. Packaging must be read carefully and kept for future reference. See product for additional warnings.

### General

- Check pins, bolts and/or screws for rust; splinters or any sharp edges regularly, especially accessible surfaces, to avoid injuries.

### Non swimmers safety

- Continuous, active, and vigilant supervision of weak swimmers and non-swimmers by a competent adult is required at all times (remembering that children under five are at the highest risk of drowning).
- Designate a competent adult to supervise the pool each time it is being used.
- Weak swimmers or non-swimmers should wear personal protection equipment when using the pool.
- When the pool is not in use, or unsupervised, remove all toys from the swimming pool and its surrounding to avoid attracting children to the pool.

### Safety devices

- It is recommended to install a barrier (and secure all doors and windows, where applicable) to prevent unauthorized access to the swimming pool.
- Barriers, pool covers, pool alarms, or similar safety devices are helpful aids, but they are not substitutes for continuous and competent adult supervision.

### Safety equipment

- It is recommended to keep rescue equipment (e.g. a ring buoy) by the pool.
- Keep a working phone and a list of emergency phone numbers near the pool.

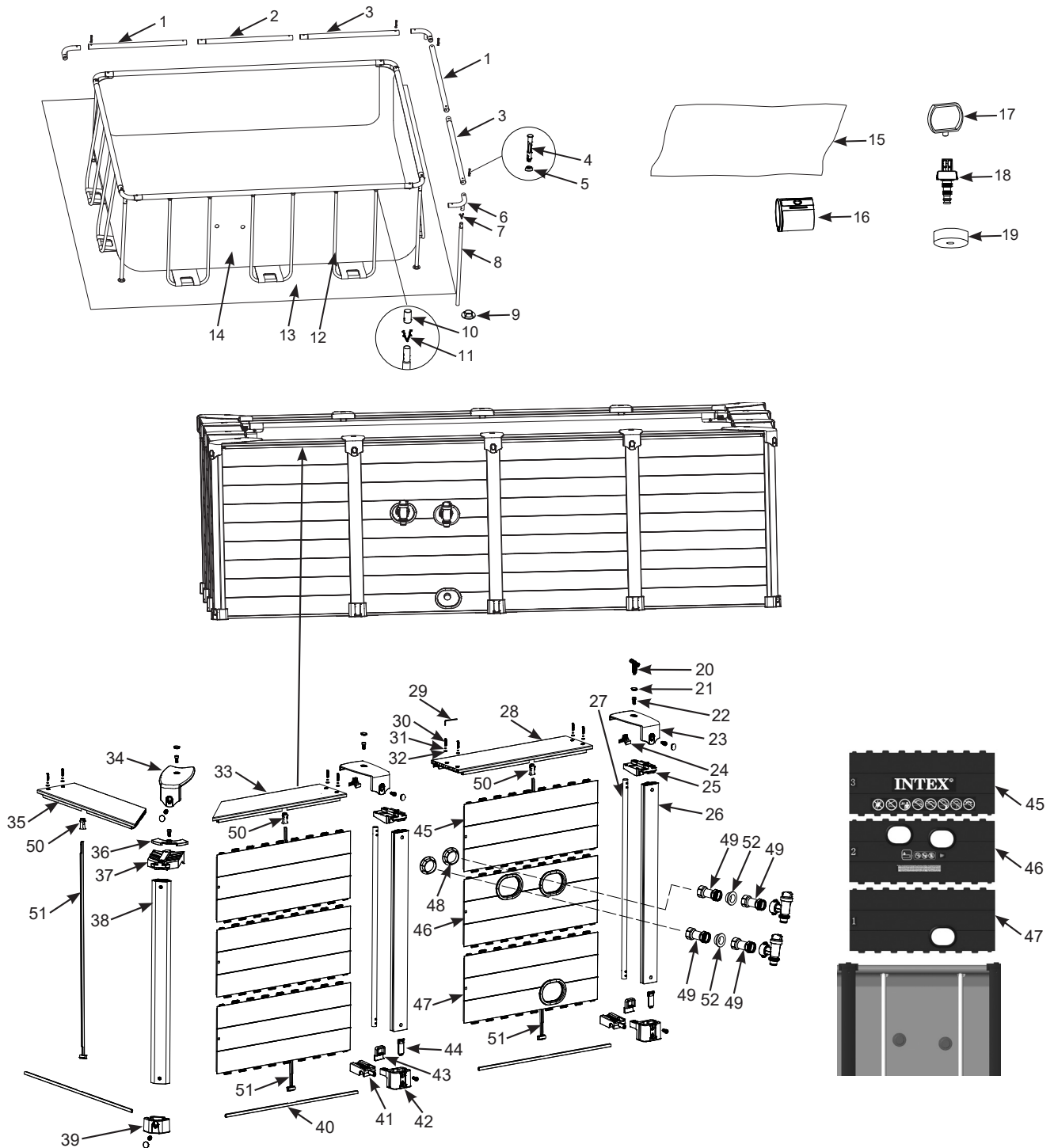
### Safe use of the pool

- Encourage all users especially children to learn how to swim.
- Learn Basic Life Support (Cardiopulmonary Resuscitation - CPR) and refresh this knowledge regularly. This can make a life-saving difference in the event of an emergency.
- Instruct all pool users, including children, what to do in case of an emergency.
- Never dive into any shallow body of water. This can lead to serious injury or death.
- Do not use the swimming pool when using alcohol or medication that may impair your ability to safely use the pool.
- When pool covers are used, remove them completely from the water surface before entering the pool.
- Protect pool occupants from water related illnesses by keeping the pool water treated and practicing good hygiene. Consult the water treatment guidelines in the user's manual.
- Store chemicals (e.g. water treatment, cleaning or disinfection products) out of the reach of children.
- Removable ladders shall be placed on a horizontal surface.
- Observe and follow the warnings and safety signs on the pool wall.

## SAVE THESE INSTRUCTIONS

## PARTS REFERENCE

Before assembling your product, please take a few minutes to check the contents and become familiar with all the parts.



**NOTE:** Drawings for illustration purpose only. Actual product may vary. Not to scale.

## SAVE THESE INSTRUCTIONS

**PARTS REFERENCE (continued)**

English

**116  
A**

REF. NO.	DESCRIPTION	QUANTITIES	SPARE PART NO.
1	HORIZONTAL BEAM (C) (PLASTIC INSERT INCLUDED)	4	13173
2	HORIZONTAL BEAM (B) (SINGLE BUTTON SPRING INCLUDED)	2	13172
3	HORIZONTAL BEAM (A) (PLASTIC INSERT & SINGLE BUTTON SPRING INCLUDED)	4	13171
4	PIN (WITH 2 EXTRA)	10	12136
5	SEAL (WITH 2 EXTRA)	10	10648
6	CORNER JOINT	4	13170
7	SPRING PIN	4	10313
8	CORNER LEG (SPRING PIN INCLUDED)	4	13175
9	LEG CAP	4	10309
10	U-SUPPORT END CAP	20	10379
11	DOUBLE BUTTON SPRING CLIP	20	10382
12	U-SHAPED SIDE SUPPORT (U-SUPPORT END CAP & DOUBLE BUTTON SPRING CLIP INCLUDED)	10	13174
13	GROUND CLOTH	1	13169
14	POOL LINER (DRAIN VALVE CAP INCLUDED)	1	13167
15	POOL COVER	1	13168
16	PLASTIC INSERT FOR HORIZONTAL CORNER PIPE	8	12795
17	SINGLE BUTTON SPRING	10	10381
18	DRAIN CONNECTOR	1	10201
19	DRAIN VALVE CAP	1	11044
20	BOLT WRENCH	3	11053
21	COVER WATERPROOF CAP (WITH 4 EXTRA)	36	13195
22	BOLT (WITH 4 EXTRA)	64	12173
23	SIDE TOP COVER	10	13186
24	COVER GAP FILLER	10	13276
25	SIDE TOP BRACKET	10	13191
26	SIDE POST	10	13178
27	SIDE LEG	10	13176
28	TOP BOARD-M	6	13182A
29	HEXAGON KEY	3	13280
30	FASTENER (WITH 4 EXTRA)	44	13277
31	SPRING WASHER (WITH 4 EXTRA)	44	13278
32	WASHER (WITH 4 EXTRA)	44	13279
33	TOP BOARD-R	4	13180A
34	CORNER TOP COVER	4	13187
35	TOP BOARD-L	4	13181A
36	CORNER TOP PLATE	4	13188
37	CORNER TOP BRACKET	4	13192
38	CORNER POST	4	13179
39	CORNER BASE	4	13190
40	BOTTOM RAIL	14	13177A
41	U-SUPPORT BOTTOM OUTER CLAMP	10	13194
42	SIDE ADJUSTABLE BASE	10	13189
43	U-SUPPORT BOTTOM INNER CLAMP	10	13193
44	ADJUSTABLE BASE CAP (WITH 2 EXTRA)	12	13196
45	SIDE BOARD	40	13070
46	SIDE BOARD COMBINATION WITH TWO HOLES	1	13185
47	SIDE BOARD COMBINATION WITH ONE HOLE	1	13184
48	STRAINER VALVE CAP	3	11240
49	PLUNGER VALVE CONNECTOR	4	11040
50	SUPPORT ROD TOP JOINT	14	13266
51	SIDE PANEL SUPPORT ROD	14	12791
52	L-SHAPE O-RING	2	11228

**SAVE THESE INSTRUCTIONS**

## POOL SETUP

### IMPORTANT SITE SELECTION AND GROUND PREPARATION INFORMATION

#### WARNING

- The pool location must allow you to secure all doors, windows, and safety barriers to prevent unauthorized, unintentional or unsupervised pool entry.
- Install a safety barrier that will eliminate access to the pool for young children and pets.
- Failure to set up the pool on flat, level, compact ground and to assemble and fill with water in accordance with the following instructions could result in the pool's collapse or the possibility that a person lounging in the pool could be swept out/ejected, resulting in serious injury or property damage.
- Risk of electric shock: connect the filter pump only to a grounding type receptacle protected by a ground-fault circuit interrupter (GFCI) or residual current device (RCD). To reduce the risk of an electrical shock, do not use extension cords, timers, plug adapters or converter plugs to connect the pump to an electrical supply. Always provide a properly located outlet. Locate the cord where it cannot be damaged by lawn mowers, hedge trimmers, and other equipment. See the filter pump manual for additional warnings and instructions.
- Risk of serious injury: do not attempt to assemble pool in high wind conditions.

Select an outdoor location for the pool with the following requirements in mind:

1. The area where the pool is to be set up must be absolutely flat and level. Do not set up the pool on a slope or inclined surface.
2. The ground surface must be compacted and firm enough to withstand the pressure and weight of a fully set up pool. **Do not** set up the pool on mud, sand, soft or loose soil conditions.
3. **Do not** set up the pool on a deck, balcony or platform, which may collapse under the weight of the filled pool.
4. The pool requires at least 5 - 6 feet (1.5 - 2.0m) of space all around pool from objects that a child could climb on to gain access to the pool.
5. Grass under the pool will be damaged. Splash out chlorinated pool water could damage the surrounding vegetation.
6. Eliminate all aggressive grasses first. Certain types of grass such as St. Augustine and Bermuda, may grow through the liner. Grass growing through the liner it is not a manufacture defect and is not covered under warranty.
7. The area shall facilitate drainage of the pool water after each use and/or for long term pool storage.

## SAVE THESE INSTRUCTIONS

## POOL SETUP (continued)

### GROUND PREPARATION

Select an outdoor location for the pool which should be on a level concrete pad. If there is no concrete pad available, follow the instructions below to prepare the installation area. It is important you ask a professional (builder or gardener) to perform the following ground preparation.

**NOTE:** Tools are not included.

#### 1. Mark the installation area

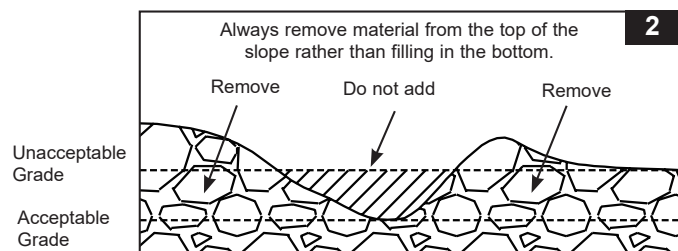
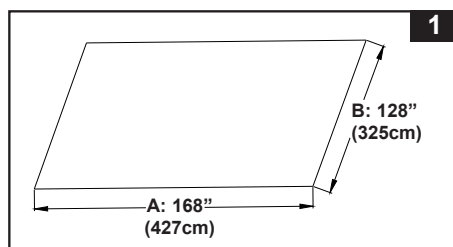
- Once the location area is chosen, use a tool to mark the length A (168"/427cm) and width B (128"/325cm) where you wish to setup the pool (see Fig 1).

#### 2. Clear the installation area

- Remove all grass, stones and sticks from marked area.

#### 3. Leveling

- Establish the lowest point in the pool setup area. Level entire pool site by digging or scraping away uneven areas to the level of the lowest point. **Always remove material from the top of the slope rather than filling in the bottom** to ensure greater ground stability and firmness. When all the areas are level and when excess ground is removed, you may fill any **small low areas** which are left to level (with fined dirt). Always compact and level ground afterwards (see Fig 2).



- Use a large mason rule (aluminum or wood) and a level. Level out the ground by cutting rectangles (or squares), locating this rule in the selected and cleaned area.

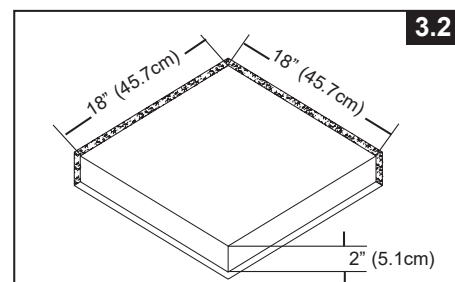
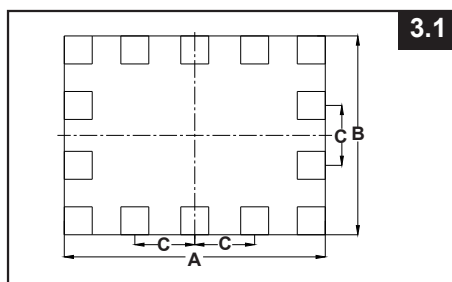
#### 4. Finishing

- On the cleaned and leveled ground, spread a light coat of sieved dirt to a maximum depth of 1/2 inch (1cm). Spray water and compact it (with a garden roller). Double check and ensure it is well leveled. The ground has to be perfectly level in order to proceed further.

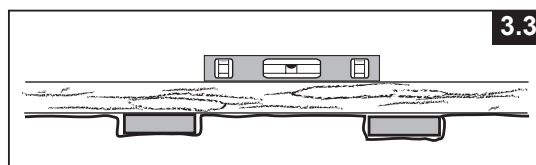
#### 5. Patio block installation

- Purchase 14 pieces of patio block. The minimum dimensions of each block should be 18" x 18" x 2" (45.7 x 45.7 x 5.1cm). Mark C at the area where the blocks will be buried (see Fig 3.1), then remove 2" (5.1cm) of soil from the marked area (see Fig 3.2).

$C = 38.5'' (97.8\text{cm})$  = Distance between each Patio Block.



- The top of the blocks must be **flush** with the ground surface and level with the surface of the area and with all patio blocks around the entire pool (see Fig 3.3).



## SAVE THESE INSTRUCTIONS



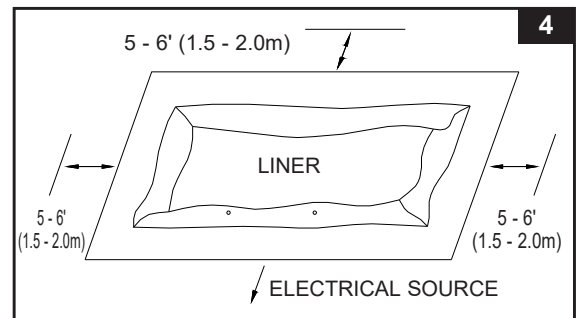
## POOL SETUP (continued)

The pump has its own separate set of installation instructions. First assemble your pool unit and then set up the filter pump.

Estimated assembly time 120 minutes excluding water filling. (Note the assembly time is only approximate and individual assembly experience may vary.)

### 1. Liner preparation

- Open the carton containing the liner, joints, legs, etc., very carefully as this carton can be used to store the pool during the winter months or when not in use.
- Take out the ground cloth (13) and spread it over the cleared area. Then take out the liner (14) and spread it out over the ground cloth, with the drain valve directed towards the draining area. Place the drain valve away from the house. Open it up to warm it in the sun. This warming will make installation easier. Make sure the liner is centered atop the ground cloth. Be sure to face the side with the hose connectors towards the electrical power source.  
**IMPORTANT: Do not drag the liner across the ground as this can cause liner damage and pool leakage (see Fig 4).**



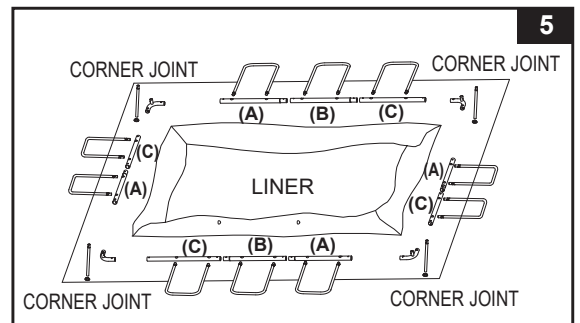
- During the set-up of this pool liner, point the hose connections or openings in the direction of the electric power source. The outer edge of the assembled pool is to be within reach of the electrical connection for the filter pump.

- Remove all the parts from the carton(s) and place them on the ground in the location where they are to be assembled. Check the parts listing and be sure all the pieces to be assembled are accounted for (see Fig 5).

**IMPORTANT: Do not start assembly if any pieces are missing. For replacement pieces call the Consumer Service telephone number in your area.**

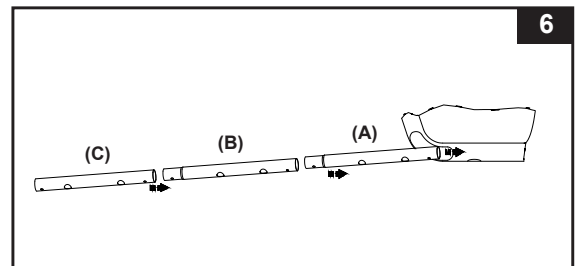
After all pieces are accounted for move the pieces away from the liner for of installation.

**NOTE: Sprinkle some talcum powder over the horizontal beams before sliding them into the pool liner sleeve. This will make removal of the beams from the liner easier during the disassembly of the pool.**



- Be sure the liner is opened and spread out to its fullest extent on top of the ground cloth. Starting with one long side, slide the "A" beams first into the sleeve openings located in each corner. Continue with "B" beam snapping into the "A" beam, and another "C" beam snapping into the "B" beam (see Fig 6). Start the "A-C" combination for pool's short sides by inserting the "A" beam first into the opening.

**NOTE: Make sure the metal beam holes are aligned with the white liner sleeve holes.**

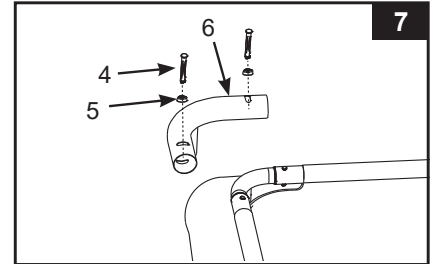


## SAVE THESE INSTRUCTIONS

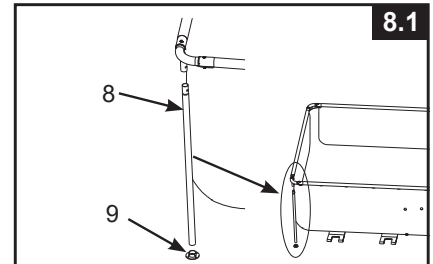
## POOL SETUP (continued)

### 2. Horizontal beams and corner legs assembly

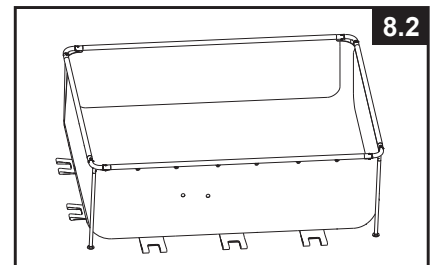
- Connect the corner joints (6) to the horizontal beams. Insert the pin (4) through the seal (5) and secure the corner joints to the beams with the pin and seal (see Fig 7).  
**NOTE: Check again to ensure the metal beam holes are aligned with the white liner sleeve holes.**



- Attach the leg's end cap (9) to the bottom of each corner leg (8) first. Connect the corner leg (8) to the corner joint (6), make sure the corner leg spring pin is snapped into the corner joint holes (see Fig 8.1). Continue the process with the other corner legs.

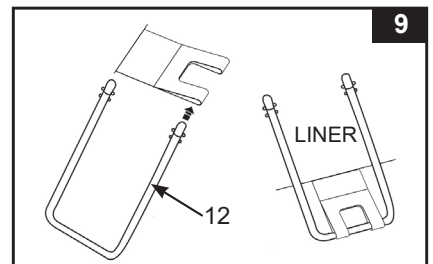


- Lift the beams assembly and make sure all the corner legs are in a vertical and perpendicular position to the ground (see Fig 8.2).

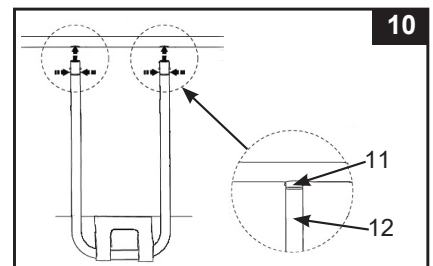


### 3. U-shaped side support assembly

- Slide the U-shaped side support (12) through the restrainer strap. Repeat the process for all the U-shaped side supports (see Fig 9).

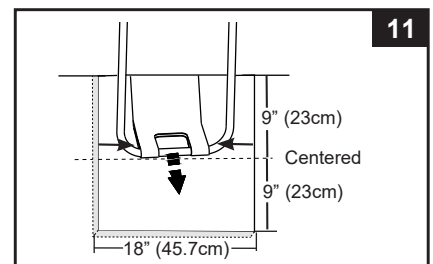


- The tops of the U-shaped side supports have a double button spring loaded clip (11) that is factory pre-installed. Insert the side supports into the "A-B-C & A-C" beam holes by squeezing the bottom button inward with your fingers. Squeezing this bottom button will allow the support to enter the beam. Once the U-support is inside the beam release the finger pressure allowing the support to "SNAP" into place. Repeat this procedure for all U-shaped side supports (see Fig 10).



- Pull the bottoms of the side supports out away from the liner to make the restrainer straps taut, and make sure the strap is centered on the U-support. Repeat for all locations (see Fig 11).

**IMPORTANT: Before proceeding to the next step, check that all the U-shaped side supports and corner legs are positioned in the middle of each patio block.**



## SAVE THESE INSTRUCTIONS

## POOL SETUP (continued)

### 4. Filling of the pool

- See filter pump manual, install the strainer nuts, flat strainer rubber washers and threaded strainer connectors on the liner pre-cut holes. Use strainer valve caps (48) and plug them into the threaded strainer connectors from the inside of the pool so water will not run out while filling.
- Before filling the pool with water, ensure that the drain plug inside the pool is closed and that the drain cap on the outside is screwed on tightly. Fill the pool with no more than 1 inch (2.5cm) of water. Check to see whether the water is level.

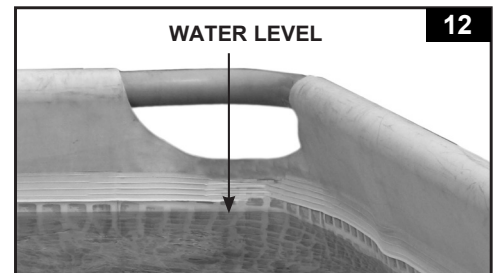
**IMPORTANT:** If the water in the pool flows to one side, the pool is not completely level. Setting up the pool on unlevelled ground will cause the pool to tilt resulting in the sidewall material bulging and a potential collapse of the pool. If the pool is not completely level, you must drain the pool, level the area or move the pool to a different area that is level, and re-fill the pool, following the above directions.

- Smooth out the bottom liner wrinkles (from inside the pool) by pushing out where the pool floor and pool sides meet. Or, (from outside pool) reach under the side of the pool, grasp the pool floor and pull in an outward direction. If the ground cloth is causing the wrinkles, have 2 people pull from opposite sides to remove all wrinkles. Use the properly assembled pool ladder when entering or exiting the pool during this process. Also make sure all the corner legs are vertical and perpendicular to the ground.

- Continue filling the pool with water up to just below the sleeve line.

**IMPORTANT:** During the filling, periodically check and pull all the U-shaped side supports out away from the liner to make the straps taut and ensure the straps are centered on the U-support. Failure to do so, will cause the pool walls to be uneven (see Fig 11).

**NOTE:** The overflow hole on the corner liner sleeve is to prevent over filling (see Fig 12).



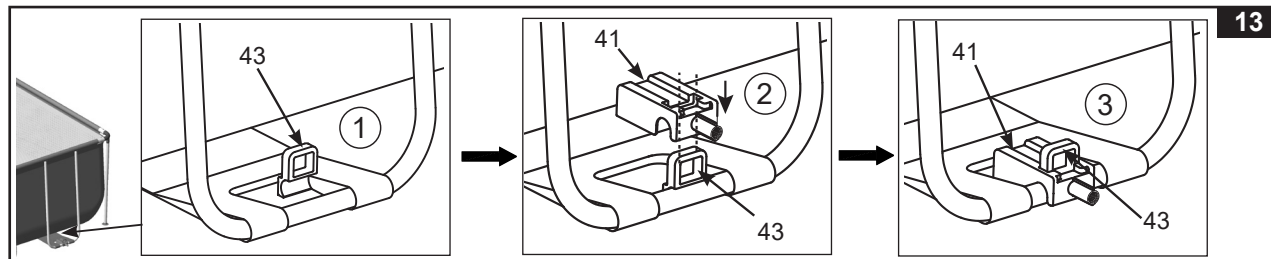
## SAVE THESE INSTRUCTIONS

## POOL ENCLOSURE SETUP

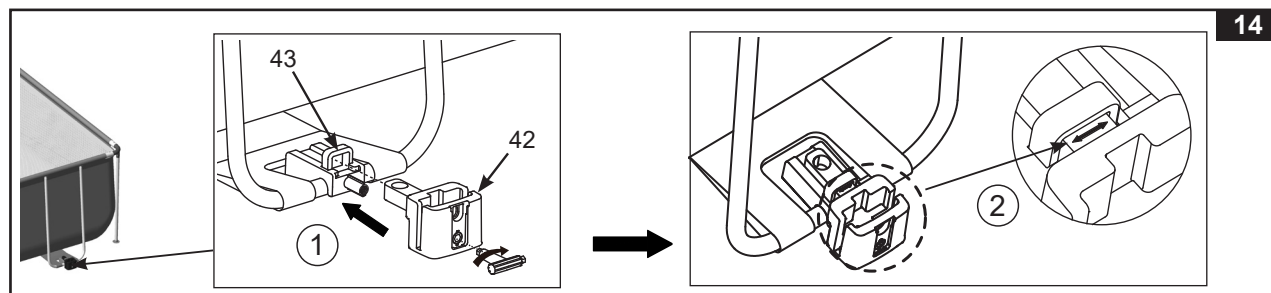
Once the pool has been filled with water, and all the U-supports and corner legs are positioned in the middle of each patio block, proceed with the assembly of the pool enclosure.

### 1. U-support bottom inner & outer clamps, and side adjustable bases installation

- Place the U-support bottom inner clamp (43) on the inside the of the U-support (12) first, then place the U-support bottom outer clamp (41) over the inner clamp (43) and the U-support (12). Make sure the inner clamp (43) is inserted through the outer clamp (41) opening (see Fig 13).



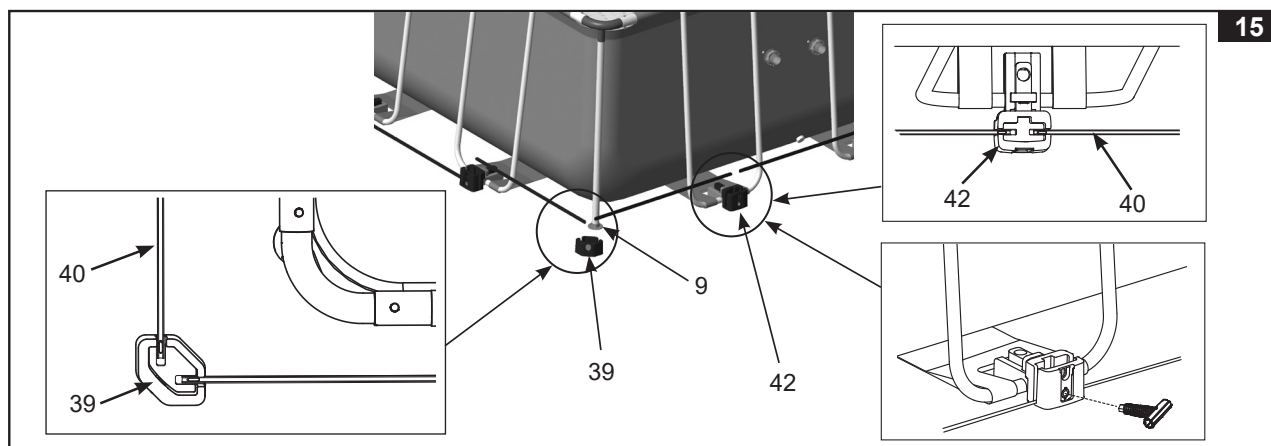
- Insert the protruding end of the side adjustable base (42) into the U-support bottom inner clamp (43) opening. Use the included bolt wrench (20) to turn the bolt inside the adjustable base (42) to secure it to the outer clamp (41). Turn the bolt clockwise until the "↔" mark is aligned with the inner clamp (43) (see Fig 14).



### 2. Corner bases and bottom rails installation

- Place a corner base (39) on the ground and align it with the corner leg cap (9). Repeat for all the corner bases (39).
- Starting at any location, but always working in the same direction, connect a bottom rail (40) in between two side adjustable bases (42) and between a corner base (39) and adjustable base (42). Ensure the holes on the bottom rail (40) hook through the knobs on the adjustable bases (42) and corner bases (39). Repeat this procedure around the pool until all the bottom rails are connected (see Fig 15).

**IMPORTANT:** Before proceeding to the next step, adjust the bottom rails (40), side adjustable bases (42) and corner bases (39) so that they are all aligned in a straight line and parallel to the pool wall. To move the side adjustable base (42) away from the U-support, turn the bolt inside the adjustable base counterclockwise. Turning the bolt clockwise will move the adjustable base closer to the U-support (see Fig 15).

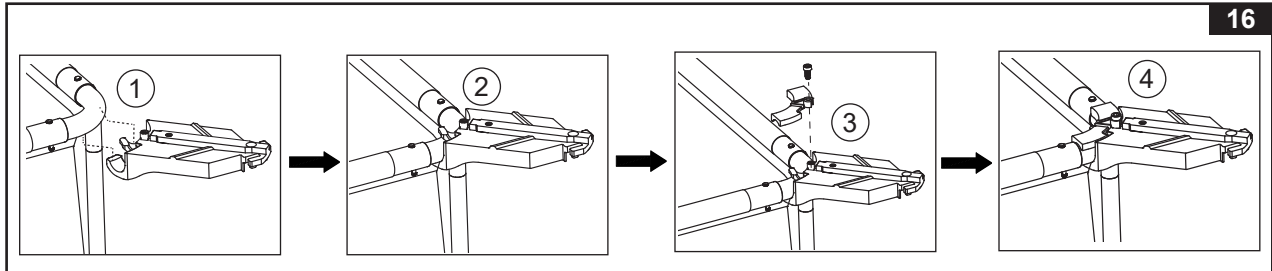


## SAVE THESE INSTRUCTIONS

## POOL ENCLOSURE SETUP (continued)

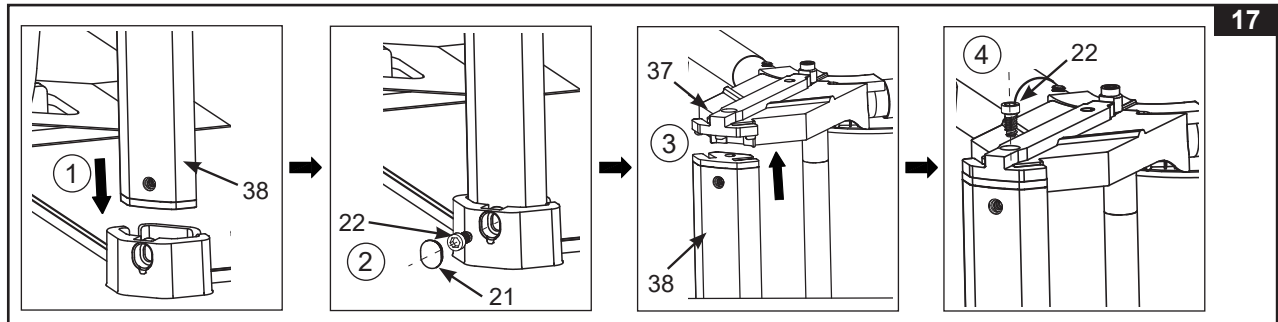
### 3a. Corner top brackets and top plates installation

- Hook the corner top brackets (37) to the bottom side of the corner joints (6).
- Attach the corner top plates (36) over the corner joints (6). Secure the corner top plate (36) to the top bracket (37) with a bolt (22) (see Fig 16). Repeat the process for the other corners.



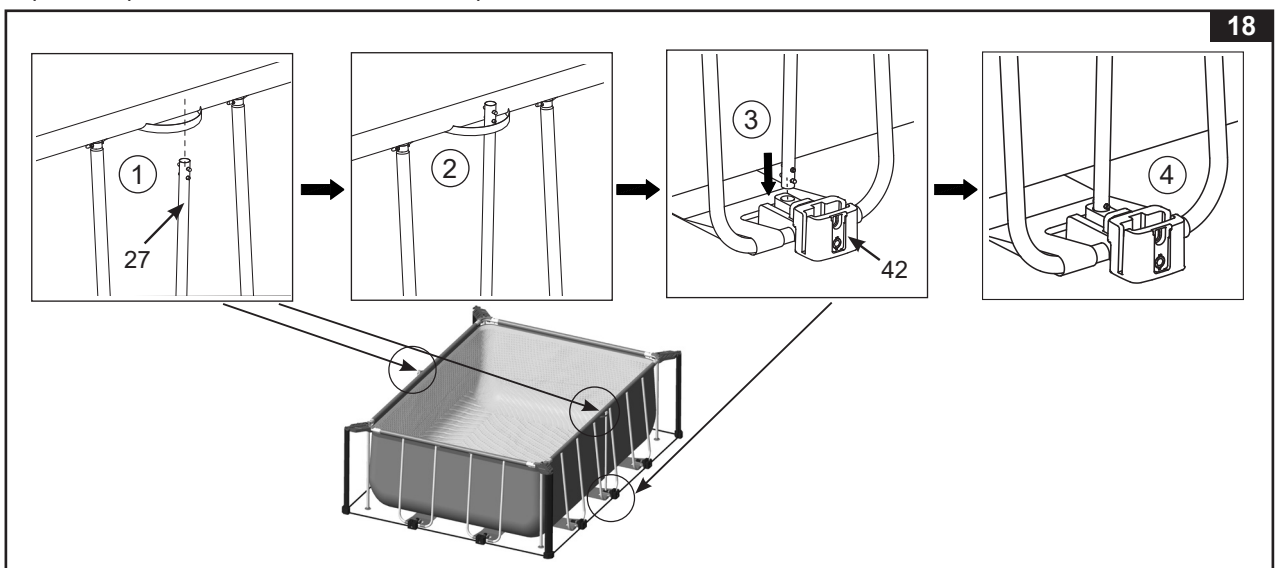
### 3b. Corner posts installation

- Remove the protective cardboard inserts from the corner post (38) grooves.
- Insert the corner posts (38) into the corner bases (39). Tighten the bolt (22) with a wrench (20) to secure the post to the base. Cover the bolt with a waterproof cap (21).
- Attach the upper part of the corner post (38) to the underside of the corner top bracket (37) and secure it with a bolt (see Fig 17).
- Repeat the process for the other corners.



### 3c. Central side legs installation (2 pieces)

- Insert the top of the side leg (27) through the belt located on each longitudinal side of the pool top sleeve.
- Insert the lower end of the side leg (27) into the side adjustable base hole (42). Ensure the spring pin is securely snapped into the hole (see Fig 18).
- Repeat the process for the other side of the pool.

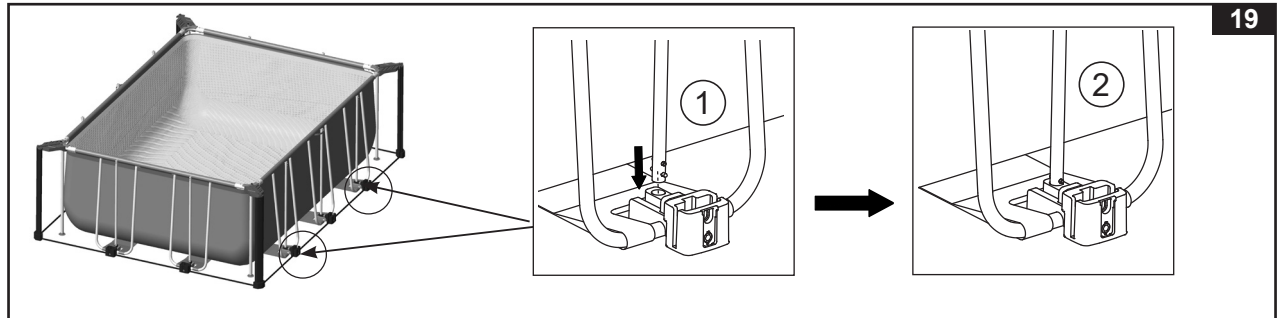


**SAVE THESE INSTRUCTIONS**

## POOL ENCLOSURE SETUP (continued)

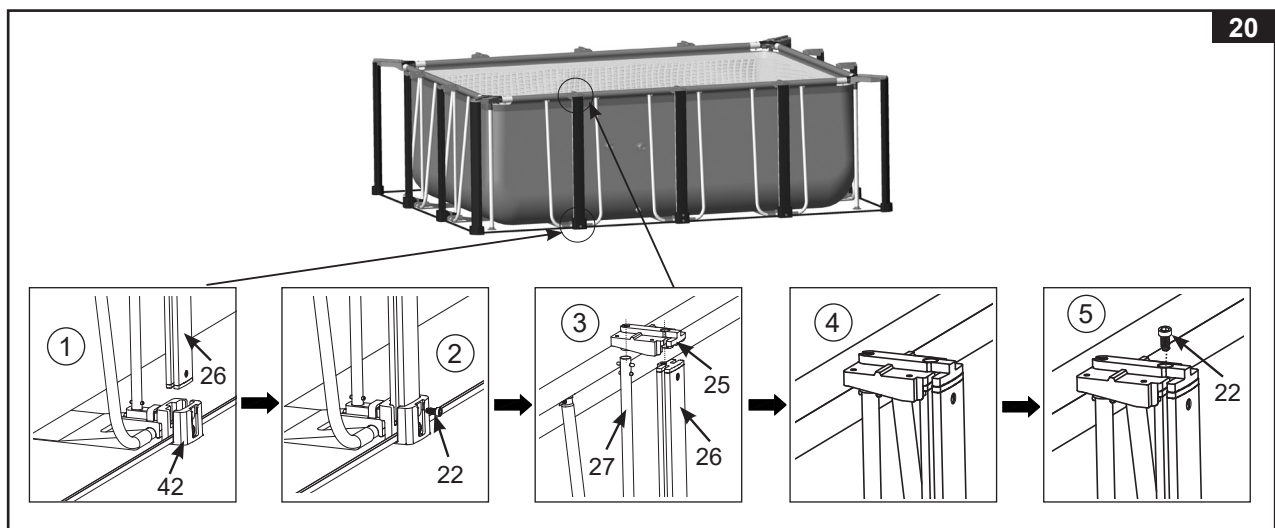
### 3d. Side legs installation

- Insert the lower end of the side leg (27) into the side adjustable base hole (42). Ensure the spring pin is securely snapped into the hole (see Fig 19).
- Repeat the process for all the side legs (27).



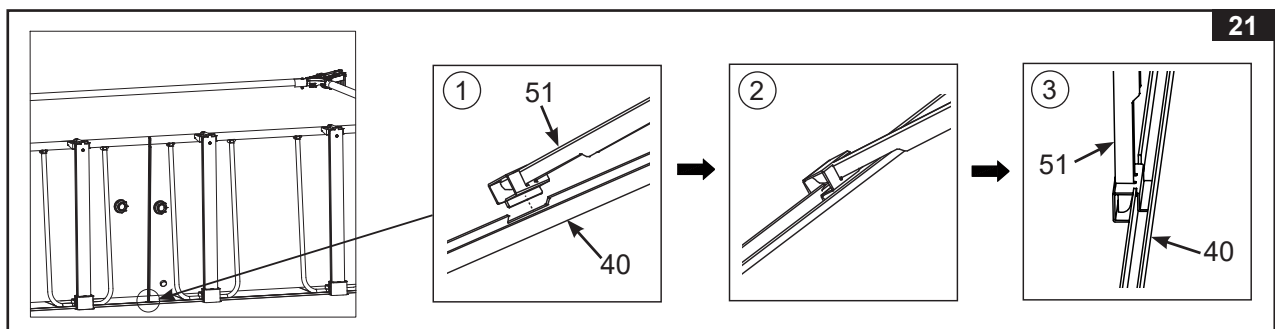
### 3e. Side posts and side top brackets installation

- Insert the side posts (26) into the side adjustable bases (42). Secure the post to the base with a bolt (22).
- Attach the side top brackets (25) to the top of the side posts (26) and side legs (27). Ensure the spring pin on the side leg snapped into the hole located under the side top brackets (25).
- Secure the side posts (26) to the side top brackets (25) with a bolt (22).
- Repeat the process for all side posts (see Fig 20).



### 3f. Side panel support rods installation

- Grab a side panel support rod (51) and attach the end of rod with the wide clasp to the center gap on the bottom rail (40).
- Tilt the side panel support rod (51) forward and install the wide clasp to the bottom rail (40), then move the support rod back to the vertical position (see Fig 21).
- Repeat the process for all the side panel support rods.

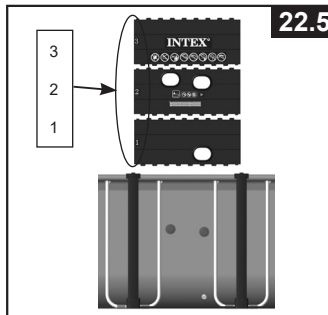
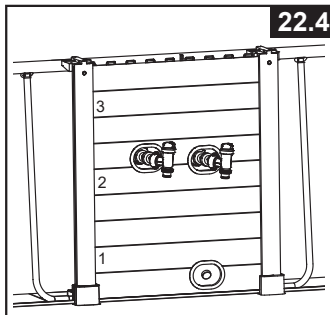
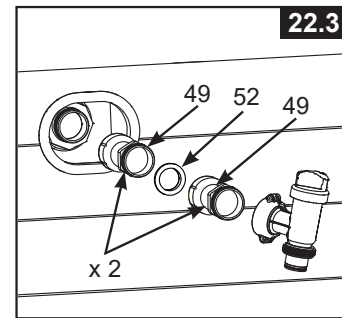
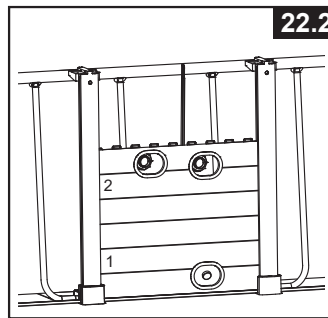
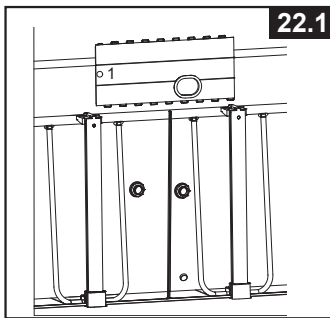


**SAVE THESE INSTRUCTIONS**

## POOL ENCLOSURE SETUP (continued)

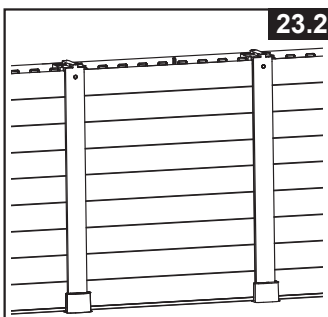
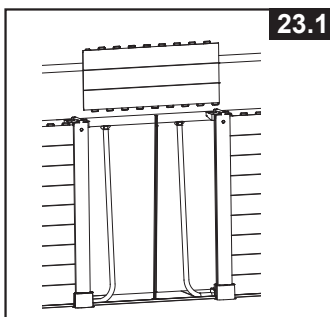
### 4a. Side boards with holes and markings installation

- Locate and unwrap the side boards with holes and markings from the pack.
- Locate the pool side with the inlet & outlet hose connection fittings and the drain valve.
- Slide in the side board marked "1" with a hole between two side posts (26). Make sure the tongues fit inside the bottom rail groove. Ensure the side board hole matches the pool drain valve (see Fig 22.1).
- Continue sliding side board marked "2". Make sure the tongues between side boards "1" and "2" interlock each other. Shake the side boards to ensure they are securely locked. Check that the side board holes match the pool inlet & outlet hose connection fittings (see Fig 22.2).
- Make sure the gaskets are inside the plunger valve connectors (49) and screw the plunger valve connectors to the threaded strainer connectors which were already installed on the pool liner during the pool set up. In a clockwise motion screw the plunger valves onto the plunger valve connectors (49). Close the plunger valves by turning the handle clockwise to the close/lock position as described in the filter pump manual (see Fig 22.3).
- Lastly, slide in the side board marked "3". Make sure the tongues between side boards "2" and "3" interlock each other. Shake the side boards to ensure they are securely interlock (see Figs 22.4 & 22.5).



### 4b. Other side boards installation

- Install the other side boards one by one from bottom to top. Make sure the tongues of the first side board fit inside the bottom rail groove. Shake the side boards to ensure the tongues between two side boards are securely interlock (see Figs 23.1 & 23.2). Make sure the side with the wood veins pattern is facing outward.



## SAVE THESE INSTRUCTIONS

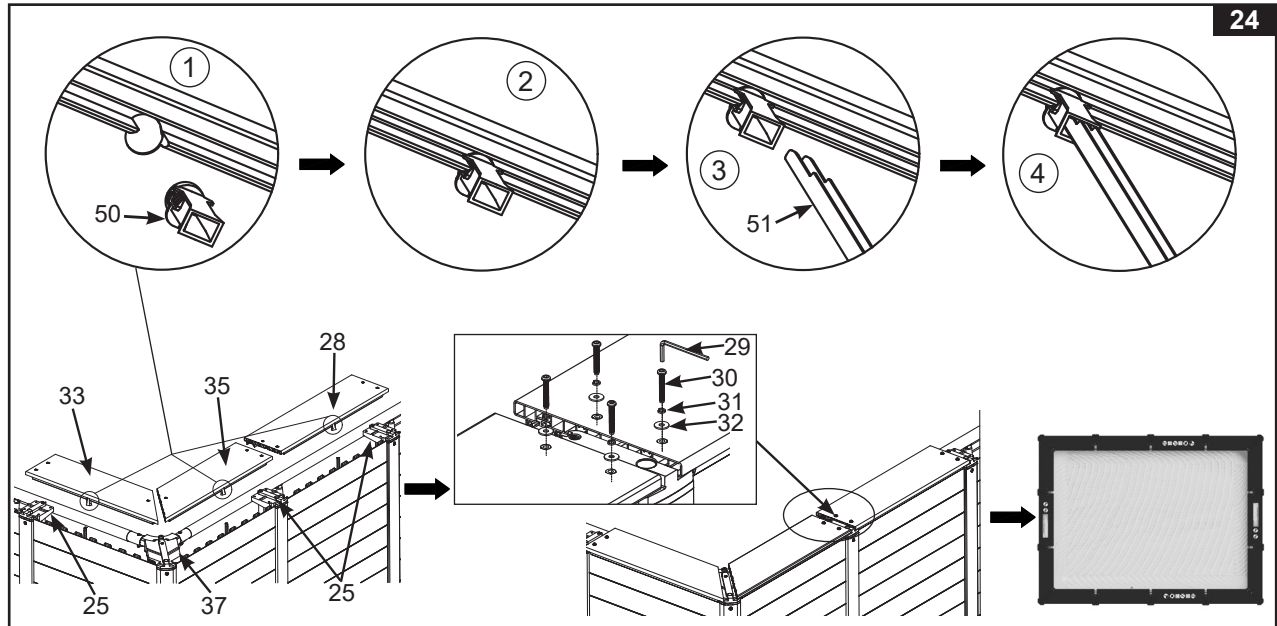


## POOL ENCLOSURE SETUP (continued)

### 5. Top boards installation

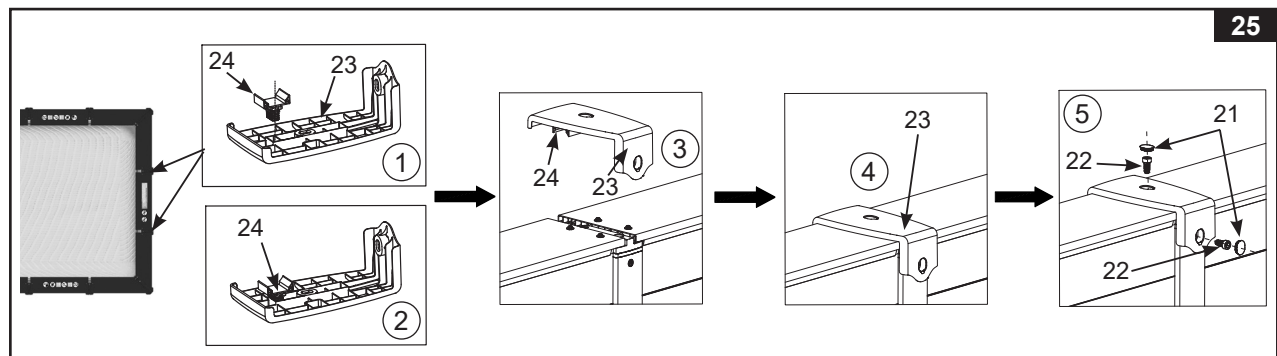
Insert the support rod top joint (50) to the hole under the top boards (28, 33 & 35). Attach the top boards (28, 33 & 35) over the top of the side boards, the pool horizontal beams and the side panel support rods, with the holes at its two ends aligned with the nuts on the side top brackets (25) and corner top brackets (37). Make sure the groove underneath the top boards fit over the side boards tongues. Use the included hexagon key (29) to secure the top boards with a washer (32), spring washer (31) and fastener (30). Repeat this procedure until all the top boards are fixed to the side and corner top brackets and side boards.

**NOTE:** Make sure the side panel support rods (51) are inserted into the respective support rod top joints (50) before tightening the screws. There are four top boards with warnings printing. Install one on each side (see Fig 24).



### 5a. Side top cover installation

- Insert the cover gap filler (24) into the side top cover (23) underside (see Fig 25).
- Attach the side top cover with the gap filler on top of the side post (26) and secure it to the post with bolts (22). Tighten the bolts with the wrench (20) and cover the bolt with a waterproof cap (21) (see Fig 25).



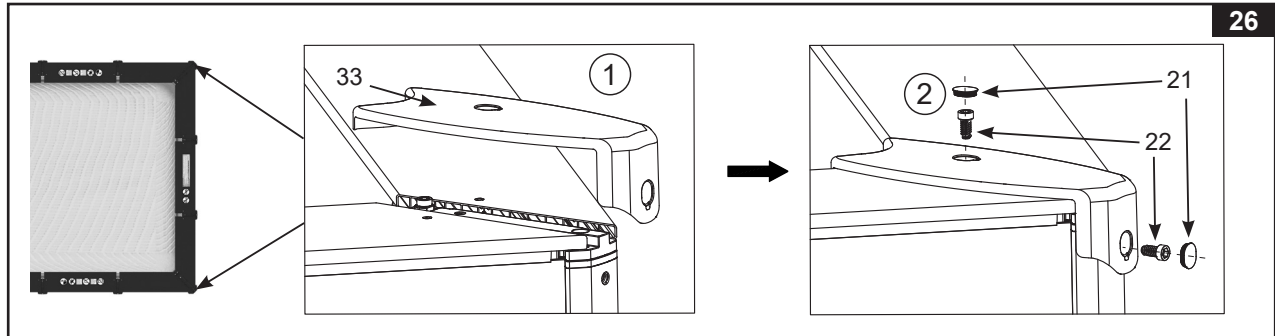
## SAVE THESE INSTRUCTIONS



## POOL ENCLOSURE SETUP (continued)

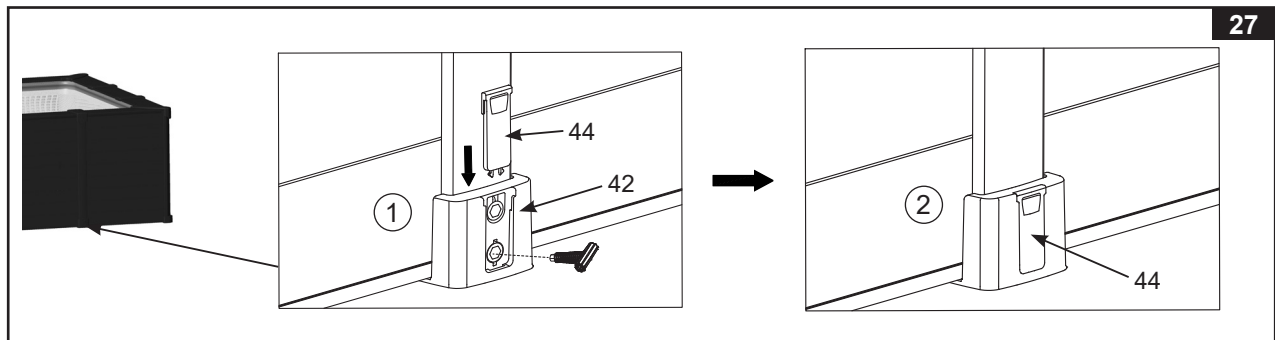
### 5b. Corner top cover installation

- Attach the corner top covers (34) to the four corners of the pool enclosure and secure the covers with a bolt (22). Tighten the bolts with the wrench, and cover the bolt with a waterproof cap (21) (see Fig 26).



### 5c. Adjustable base cap installation

- Check that all the side adjustable bases (42) are aligned and straight. Turn the lower bolt on the adjustable base (42) clockwise to move the base closer to the pool wall and turn counterclockwise to move the base away from the pool wall. Slide the adjustable base cap (44) into the side adjustable base (42) to cover the bolts (see Fig 27).



**SAVE THESE INSTRUCTIONS**

## POOL MAINTENANCE & CHEMICALS



### CAUTION

ALWAYS FOLLOW THE CHEMICAL MANUFACTURER'S DIRECTIONS, AND THE HEALTH AND HAZARD WARNINGS.

**Do not add chemicals if the pool is occupied. This can cause skin or eye irritation.** Concentrated chlorine solutions can damage the pool liner. In no event is Intex Recreation Corp., Intex Development Co. Ltd., their related companies, authorized agents and service centers, retailers or employees liable to the buyer or any other party for costs associated with the loss of pool water, chemicals or water damage. **Keep spare filter cartridges on hand. Replace cartridges every two weeks.** We recommend the use of a Krystal Clear® Intex Filter Pump with all of our above-ground-pools.

**EXCESSIVE RAIN:** To avoid damage to the pool and over filling, immediately drain rain water that causes the water level to be higher than the maximum.

#### Water maintenance

The maintenance of a proper water balance through appropriate use of sanitizers is the single most important factor in maximizing the life and appearance of the liner as well as ensuring clean, healthy and safe water. Proper technique is important for water testing and treating the pool water. See your pool professional for chemical, test kits and testing procedures. Be sure to read and follow the written instructions from the chemical manufacturer.

1. Never let chlorine come in contact with the liner if it is not completely dissolved. Dissolve granular or tablet chlorine first in a bucket of water, then add it to the pool water. Likewise with liquid chlorine; mix it immediately and thoroughly with the pool water.
2. Never mix chemicals together. Add the chemicals to the pool water separately. Thoroughly dissolve each chemical before adding another one to the water.
3. An Intex pool skimmer and an Intex pool vacuum are available to assist in maintaining clean pool water. See your pool dealer for these pool accessories.
4. Do not use a pressure washer to clean the pool.



### WARNING

#### REMEMBER TO

- Protect all pool occupants from possible water-related illnesses by keeping the pool water clean and sanitized. Do not swallow the pool water. Always practice good hygiene.
- Keep your pool clean and clear. The pool floor must be visible at all times from the outside barrier of the pool.
- Keep children away from pool covers to avoid entanglement, drowning, or other serious injury.

## SAVE THESE INSTRUCTIONS

## WINTER PREPARATIONS

### Winterizing your Above Ground Pool

At the end of the pool season, you can choose to drain and disassemble the pool for storage, or leave it assembled while following these winterization instructions. Leaving it assembled for winterization will conserve water, reduce the risk of liner damage during disassembly, and help prevent ice damage to the pool and its accessories. Disassembly and storage will free the space up for other uses.

### Winterization Steps

You will first need to disconnect and drain the filtration system, removing the hoses, ladder and all accessories from the pool. Properly store them when the temperature drops below 32°F (0°C) to prevent ice damage to the filter pump and accessories. Prepare the pool for the winter as follows:

1. Filter and clean the pool water thoroughly and balance the pool chemicals. Leave the clean water in the pool.
2. Remove any accessories (such as skimmer, sprayer) attached to the threaded strainer connector. Replace the strainer grid if necessary. Be sure all the accessories are clean and completely dry before storage.
3. Plug the inlet and outlet fitting from the inside of the pool with the plug provided or close the plunger valves.
4. Remove the ladder (if applicable) and store in a safe place. Be sure the ladder is completely dry before storage.
5. Remove the hoses that connect the filter pump to the pool.
6. Add the appropriate chemicals for the winter period. Consult your local pool dealer as to which chemicals you should use and how to use them. This can vary greatly by region.
7. Cover the pool with an Intex Pool Cover or a winter pool cover from your local pool dealer. Depending on the severity of your winter weather, it is recommended to add an air pillow to the center of the pool before adding the cover. The pool pillow will help absorb the expansion of the pool water when it freezes and will alleviate pressure on the cover from snow accumulation.

**IMPORTANT NOTE: INTEX POOL COVER IS NOT A SAFETY COVER. THE POOL LINER MAY BECOME STIFF WHEN THE TEMPERATURE DROPS BELOW 32°F (0°C) - NEVER STRIKE, HIT, OR IMPACT THE POOL LINER.**

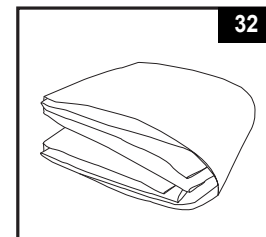
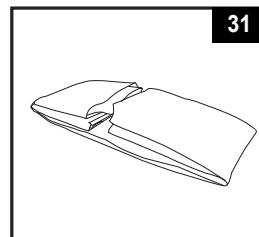
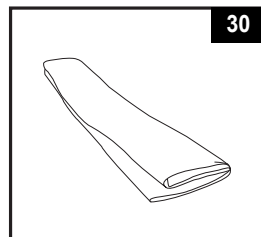
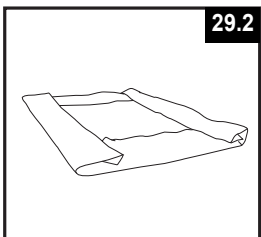
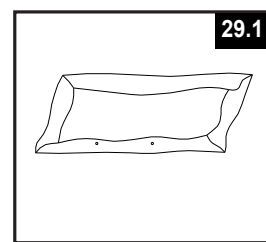
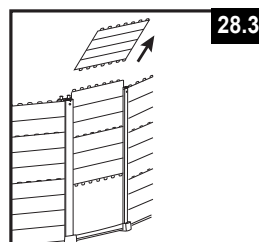
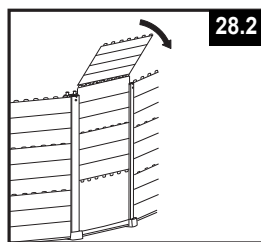
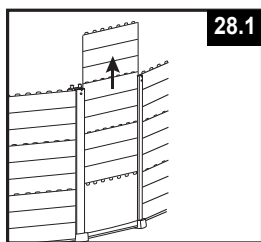
8. Clean and drain the pump, filter housing and hoses. Remove and discard the old filter cartridge. Keep a spare cartridge for the next season.
9. Bring the filter pump and accessories indoors and store in a safe and dry area, preferably between 32 degrees Fahrenheit (0 degrees Celsius) and 104 degrees Fahrenheit (40 degrees Celsius).

## SAVE THESE INSTRUCTIONS

## LONG TERM STORAGE & DRAINAGE

If you plan not to use the pool for an extended period of time—to free up space, move to avoid hazardous weather conditions, etc.—follow the instructions below to drain your pool and set up long-term storage.

1. Check local regulations for specific directions regarding disposal of swimming pool water.
2. Check to make sure that the drain plug inside the pool is plugged in place.
3. Remove the cap from the drain valve on the outside pool wall.
4. Attach the female end of the garden hose to the drain connector.
5. Place the other end of the hose in an area where the water can be safely drained away from the house and other nearby structures.
6. Attach the drain connector to the drain valve. **NOTE: The drain connector will push the drain plug open inside the pool and water will start to drain immediately.**
7. When the water stops draining, start lifting the pool from the side opposite the drain, leading any remaining water to the drain and emptying the pool completely.
8. Disconnect hose and adapter when finished.
9. Re-insert drain plug in drain valve on inside of pool for storage.
10. Replace drain cap on outside of pool.
11. Reverse set-up instructions to disassemble the enclosure and pool, and remove all connecting parts.  
**NOTE: For side boards disassembly, lift the boards up, when the upper board is higher than the support posts, gently shake the upper board to loosen it. Repeat this procedure for all side boards (see Figs 28.1 - 28.3).**
12. Be sure that the pool and all parts are completely dry before storage. Air dry the liner in the sun until completely dry before folding (see Fig 29.1). Sprinkle some talcum powder to prevent the vinyl from sticking together and to absorb any residual missed.
13. Create a square shape. Starting at one side, fold one-sixth of liner in on itself twice. Do the same on the opposite side (see Fig 29.2).
14. Once you have created two opposing folded sides, simply fold one over the other like closing a book (see Fig 30).
15. Fold the two long ends to the middle (see Fig 31).
16. Fold one over the other like closing a book and finally compact the liner (see Fig 32).
17. Safely store the empty pool in such a way that it does not collect water from rain or any other source, and to prevent from being blown away by strong wind. Store the liner and accessories in a dry, temperature controlled, between 32 degrees Fahrenheit (0 degrees Celsius) and 104 degrees Fahrenheit (40 degrees Celsius), storage location.
18. The original packing can be used for storage.



## SAVE THESE INSTRUCTIONS

## GENERAL AQUATIC SAFETY

Water recreation is both fun and therapeutic. However, it involves inherent risks of injury and death. To reduce your risk of injury, read and follow all product, package and package insert warnings and instructions. Remember, however, that product warnings, instructions and safety guidelines cover some common risks of water recreation, but do not cover all risks and or dangers.

For additional safeguards, also familiarize yourself with the following general guidelines as well as guidelines provided by nationally recognized Safety Organizations:

- Demand constant supervision. A competent adult should be appointed as a “lifeguard” or water watcher, especially when children are in and around the pool.
- Learn to swim.
- Take the time to learn CPR and first aid.
- Instruct anyone who is supervising pool users about potential pool hazards and about the use of protective devices such as locked doors, barriers, etc.
- Instruct all pool users, including children what to do in case of an emergency.
- Always use common sense and good judgement when enjoying any water activity.
- Supervise, supervise, supervise.

## TROUBLESHOOTING

PROBLEM	DESCRIPTION	CAUSE	SOLUTION
<b>ALGAE</b>	<ul style="list-style-type: none"> <li>• Greenish water.</li> <li>• Green or black spots on pool liner.</li> <li>• Pool liner is slippery and/or has a bad odor.</li> </ul>	<ul style="list-style-type: none"> <li>• Chlorine and pH level need adjustment.</li> </ul>	<ul style="list-style-type: none"> <li>• Super chlorinate with shock treatment. Correct pH to your pool store's recommended level.</li> <li>• Vacuum pool bottom.</li> <li>• Maintain proper chlorine level.</li> </ul>
<b>COLORED WATER</b>	<ul style="list-style-type: none"> <li>• Water turns blue, brown, or black when first treated with chlorine.</li> </ul>	<ul style="list-style-type: none"> <li>• Copper, iron or manganese in water being oxidized by the added chlorine.</li> </ul>	<ul style="list-style-type: none"> <li>• Adjust pH to recommended level.</li> <li>• Run filter until water is clear.</li> <li>• Replace cartridge frequently.</li> </ul>
<b>FLOATING MATTER IN WATER</b>	<ul style="list-style-type: none"> <li>• Water is cloudy or milky.</li> </ul>	<ul style="list-style-type: none"> <li>• “Hard water” caused by a too high pH level.</li> <li>• Chlorine content is low.</li> <li>• Foreign matter in water.</li> </ul>	<ul style="list-style-type: none"> <li>• Correct the pH level. Check with your pool dealer for advice.</li> <li>• Check for proper chlorine level.</li> <li>• Clean or replace your filter cartridge.</li> </ul>
<b>CHRONIC LOW WATER LEVEL</b>	<ul style="list-style-type: none"> <li>• Level is lower than on previous day.</li> </ul>	<ul style="list-style-type: none"> <li>• Rip or hole in pool liner or hoses.</li> </ul>	<ul style="list-style-type: none"> <li>• Repair with patch kit.</li> <li>• Finger tighten all caps.</li> <li>• Replace the hoses.</li> </ul>
<b>SEDIMENT ON POOL BOTTOM</b>	<ul style="list-style-type: none"> <li>• Dirt or sand on pool floor.</li> </ul>	<ul style="list-style-type: none"> <li>• Heavy use, getting in and out of pool.</li> </ul>	<ul style="list-style-type: none"> <li>• Use Intex pool vacuum to clean bottom of pool.</li> </ul>
<b>SURFACE DEBRIS</b>	<ul style="list-style-type: none"> <li>• Leaves, insects etc.</li> </ul>	<ul style="list-style-type: none"> <li>• Pool too close to trees.</li> </ul>	<ul style="list-style-type: none"> <li>• Use Intex pool skimmer.</li> </ul>
<b>SIDE BOARDS FLEX INWARD TOO MUCH</b>	<ul style="list-style-type: none"> <li>• Wall side boards flex inward when push in.</li> </ul>	<ul style="list-style-type: none"> <li>• The side panel support rods are not correctly installed.</li> </ul>	<ul style="list-style-type: none"> <li>• Make sure the side panel support rod is securely inserted into the bottom rail and the top board.</li> </ul>

## SAVE THESE INSTRUCTIONS

## LIMITED WARRANTY

Your Intex Pool has been manufactured using the highest quality materials and workmanship. All Intex products have been inspected and found free of defects prior to leaving the factory. This Limited Warranty applies to the Intex Pool only.

This limited warranty is in addition to, and not a substitute for, your legal rights and remedies. To the extent that this warranty is inconsistent with any of your legal rights, they take priority. For example, consumer laws across the European Union provide statutory warranty rights in addition to the coverage you receive from this limited warranty: for information on EU-wide consumer laws, please visit the European Consumer Center website at [http://ec.europa.eu/consumers/ecc/contact\\_en/htm](http://ec.europa.eu/consumers/ecc/contact_en/htm).

The provisions of this Limited Warranty apply only to the original purchaser and are not transferable. This Limited Warranty is valid for the period noted below from the date of the initial retail purchase. Keep your original sales receipt with this document, as proof of purchase will be required and must accompany warranty claims or the Limited Warranty will be invalid.

Pool Liner and Frame Warranty - 2 Years

If you find a manufacturing defect in the Intex Pool during the warranty period, please contact the appropriate Intex Service Center listed in the separate "Authorized Service Centers" sheet. If the item is returned as directed by the Intex Service Center, the Service Center will inspect the item and determine the validity of the claim. If the item is covered by the provisions of the warranty, the item will be repaired or replaced, with the same or comparable item (at Intex's choice) at no charge to you.

Other than this warranty, and other legal rights in your country, no further warranties are implied. To the extent possibly in your country, in no event shall Intex be liable to you or any third party for direct or consequential damages arising out of the use of your Intex Pool, or Intex or its agents' and employees' actions (including the manufacture of the product). If your country does not allow the exclusion or limitation of incidental or consequential damages, this limitation or exclusion does not apply to you.

You should note that this limited warranty does not apply in the following circumstances:

- If the Intex Pool is subject to negligence, abnormal use or application, accident, improper operation, improper maintenance or storage.
- If the Intex Pool is subject to damage by circumstances beyond Intex's control, including but not limited to, punctures, tears, abrasions, ordinary wear and tear and damage caused by exposure to fire, flood, freezing, rain, or other external environmental forces;
- To parts and components not sold by Intex; and/or
- To unauthorized alterations, repairs or disassembly to the Intex Pool by anyone other than Intex Service Center personnel.

The costs associated with the loss of pool water, chemicals or water damages are not covered by this warranty. Injury or damage to any property or person is not covered by this warranty.

Read the owner's manual carefully and follow all instructions regarding proper operation and maintenance of your Intex Pool. Always inspect your product prior to use. This limited warranty will be void if use instructions are not followed.

## SAVE THESE INSTRUCTIONS