

English

137  
IO

# INTEX® OWNER'S MANUAL

PREMIUM SPA TRAY Model TL520 0.2 W

READ AND FOLLOW ALL INSTRUCTIONS BEFORE USING THIS PRODUCT



## WARNING

- For adult use only. This product is not a toy, keep away from children.
- Do not stare directly at the light emitted by this product.
- Do not replace the batteries while in the pool or spa.
- Do not sit, straddle or stand on the product.
- Never place hot liquids, glass or breakable objects on the product.
- Remove product before placing a cover over the spa tub.
- Do not dispose of the batteries in regular trash, municipal waste stream or by fire as battery may leak or explode. Always dispose of the batteries safely in accordance with your local law and regulations.
- Never recharge non-rechargeable batteries.
- Do not short-circuit the terminals of the battery or rechargeable battery.
- This product is resistant to water, but it is not designed to be completely submerged. Submersion could cause water to enter the product causing damage to the electronics.
- If the battery compartment does not close securely, stop using the product and keep it away from children; If you think batteries might have been swallowed or placed inside any part of the body, seek immediate medical attention.

**FOLLOW THESE RULES AND ALL INSTRUCTIONS TO AVOID INJURY OR PROPERTY DAMAGE.**



## BATTERY WARNING

**KEEP OUT OF REACH OF CHILDREN**

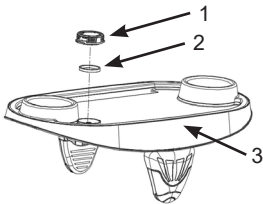
Swallowing can lead to chemical burns, perforation of soft tissue, and death. Severe burns can occur within 2 hours of ingestion. Seek medical attention immediately.



# SAVE THESE INSTRUCTIONS

**General Information:**

- This product operates on two (2) replaceable CR2032 size lithium batteries.
- Do not mix old and new batteries. Do not mix alkaline, standard (Carbon - Zinc), or rechargeable (Nickel - Cadmium) batteries.
- Dry any water on the product prior to battery installation. Remove used batteries promptly. Replace all the batteries at the same time.
- Always purchase the correct size and grade of battery most suitable for the intended use. Ensure batteries are installed correctly with regard to polarity (+ and -). Clean the battery contacts and also those of the device prior to battery installation.
- To clean the product, use only a damp cloth. Avoid strong cleaner, excessive water and abrasive brush.
- If leaking battery liquid (electrolyte) comes in contact with skin, wash immediately with soap and water or neutralize it with vinegar or lemon juice. In case of contact with eyes, rinse immediately with plenty of water for 10 minutes and seek medical advice.
- The light source of this appliance is not replaceable; when the light source reaches its end of life the whole appliance shall be replaced.
- Store the product indoors when not in use.

**Parts Reference:**

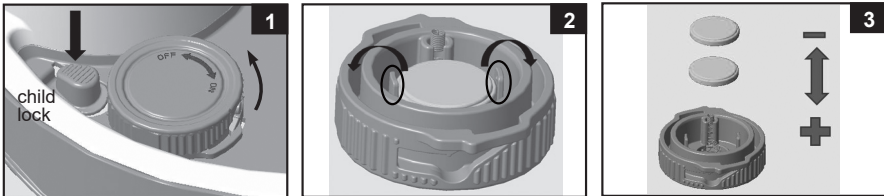
REF. NO.	DESCRIPTION	QTY.	SPARE PART NO.
1	Switch & battery cover	1	13024
2	Seal	1	13025
3	SPA tray with LED light	1	13026

**Note:** Drawings for illustration purposes only. Actual product may vary. Not to scale.

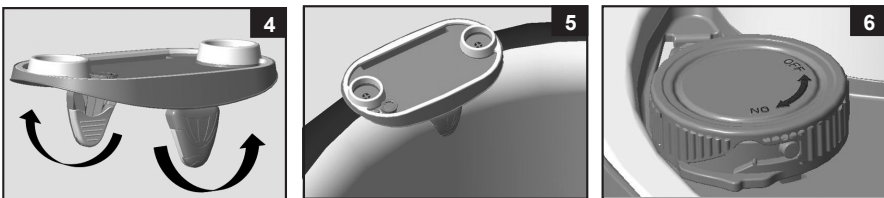
# SAVE THESE INSTRUCTIONS

**To Install or Replace the Batteries:**

1. While pushing down the “child lock” rotates the switch & battery cap (1) fully counterclockwise and remove it from the tray. See Fig (1).
2. Remove the old batteries from the switch & battery cap (1), see Fig (2) and insert 2 new CR2032 batteries following the orientation shown in Fig (3). Make sure the seal (2) is in place.
3. Reinstall the switch & battery cap (1) to the spa tray.

**Setup and LED Light Operation:**

1. Unfold the arms. See Fig (4).
2. Place the spa tray over a spa wall top edge. Ensure the arms are snugly fitted over the wall and the spa tray is parallel to the level ground. See Fig (5). You may place a tablet or smartphone on the groove. **NOTE:** Not suitable for SimpleSpa™ model.
3. Rotate the switch & battery cap (1) clockwise to turn ON the light, and rotate counterclockwise to turn OFF the light. See Fig (6).

**Storage:**

1. Clean and air dry thoroughly.
2. The original packaging can be used for storage. Store in a dry, cool storage location.

# SAVE THESE INSTRUCTIONS

## Limited Warranty

137  
IO

Your PREMIUM SPA TRAY has been manufactured using the highest quality materials and workmanship. All Intex products have been inspected and found free of defects prior to leaving the factory. This Limited Warranty applies to the PREMIUM SPA TRAY only.

This limited warranty is in addition to, and not a substitute for, your legal rights and remedies. To the extent that this warranty is inconsistent with any of your legal rights, they take priority. For example, consumer laws across the European Union provide statutory warranty rights in addition to the coverage you receive from this limited warranty: for information on EU-wide consumer laws, please visit the European Consumer Center website at [http://ec.europa.eu/consumers/ecc/contact\\_en/htm](http://ec.europa.eu/consumers/ecc/contact_en/htm).

The provisions of this Limited Warranty apply only to the original purchaser and are not transferable. This Limited Warranty is valid for a period of one (1) year from the date of the initial retail purchase. Keep your original sales receipt with this document, as proof of purchase will be required and must accompany warranty claims or the Limited Warranty will be invalid.

If you find a manufacturing defect in the PREMIUM SPA TRAY during the warranty period, please contact the appropriate Intex Service Center listed in the separate "Authorized Service Centers" sheet. If the item is returned as directed by the Intex Service Center, the Service Center will inspect the item and determine the validity of the claim. If the item is covered by the provisions of the warranty, the item will be repaired or replaced, with the same or comparable item (at Intex's choice) at no charge to you.

Other than this warranty, and other legal rights in your country, no further warranties are implied. To the extent possibly in your country, in no event shall Intex be liable to you or any third party for direct or consequential damages arising out of the use of your PREMIUM SPA TRAY, or Intex or its agents' and employees' actions (including the manufacture of the product). If your country does not allow the exclusion or limitation of incidental or consequential damages, this limitation or exclusion does not apply to you.

You should note that this limited warranty does not apply in the following circumstances:

- If the PREMIUM SPA TRAY is subject to negligence, abnormal use or application, accident, improper operation, improper voltage or current contrary to operating instructions, improper maintenance or storage;
- If the PREMIUM SPA TRAY is subject to damage by circumstances beyond Intex's control, including but not limited to, ordinary wear and tear and damage caused by exposure to fire, flood, freezing, rain, or other external environmental forces;
- To parts and components not sold by Intex; and/or.
- To unauthorized alterations, repairs or disassembly to the PREMIUM SPA TRAY by anyone other than Intex Service Center personnel.

Injury or damage to any property or person is not covered by this warranty.

Read the owner's manual carefully and follow all instructions regarding proper operation and maintenance of your PREMIUM SPA TRAY. Always inspect your product prior to use. This limited warranty will be void if use instructions are not followed.

©2024 Intex Marketing Ltd. - Intex Development Co. Ltd. - Intex Recreation Corp. All rights reserved/Tous droits réservés/Todos los derechos reservados/Alle Rechte vorbehalten. Printed in China/Imprimé en Chine/Impreso en China/Gedruckt in China.

®™ Trademarks used in some countries of the world under license from/®™ Marques utilisées dans certains pays sous licence de/Marcas registradas utilizadas en algunos países del mundo bajo licencia de/Warenzeichen verwendet in einigen Ländern der Welt in Lizenz von/Intex Marketing Ltd. to/a/an Intex Development Co. Ltd., Hong Kong & Intex Recreation Corp., P.O. Box 1440, Long Beach, CA 90801 • Distributed in the European Union by/Distribué dans l'Union Européenne par/Distribuido en la Unión Europea por/Vertrieb in der Europäischen Union durch/Intex Trading B.V., Ettenseweg 46, 4706 PB Roosendaal - The Netherlands • Distributed in the UK by Intex Service (UK) Limited, 21 Holborn Viaduct, London EC1A 2DY, UK.  
[www.intexcorp.com](http://www.intexcorp.com)

**INTEX®**

**SAVE THESE INSTRUCTIONS**